

The Smart Transition to Digital Imaging

FDR D-EVO™ is the smart way to transition to DR without modification to the existing X-ray room. The lightest portable detector of its size available today, D-EVO provides portability to address lateral or other cassette-based exams on demand.



Fast, lightweight and a perfect fit.



FDR D-EVO

FDR D-EVO is a portable flat panel detector (FPD) that introduces an intelligent alternative for analog to digital conversions. With quick image availability and short cycle times, D-EVO will improve efficiency and reduce patient waiting, without compromising image quality, flexibility or reliability.

Speed!

5 second image previews and 9 second cycle times. Now that is fast! One image is completed and the next is ready to go! Just position, expose and send! 3 easy steps to the next image! D-EVO is perfect for busy environments such as trauma, when quick image availability is critical. Fast cycle times are important to any busy environment. Who wants to wait between images? With the D-EVO you won't have to.

Lightweight!

At just 6 pounds, D-EVO's lightweight design allows faster positioning and reduced strain on technologists. D-EVO is easy to carry and because it features the same dimensions as a standard size cassette, it's easy to position behind patients for maximum utility.

A Perfect Fit!

The D-EVO will fit into any existing bucky without modifications. Thanks to its 14 x 17" design, D-EVO can easily be employed in existing analog x-ray rooms or with integrated DR rooms to add flexibility for any cassette-based clinical needs.

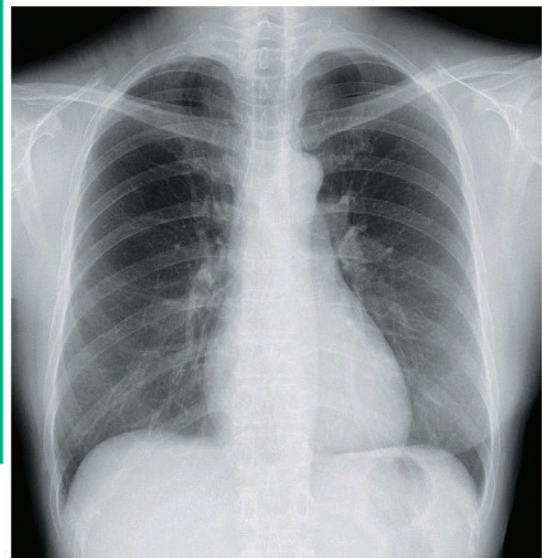
Impressive Image Quality!

As the worldwide leader in digital x-ray, Fujifilm has unparalleled experience in optimizing image quality. D-EVO features 150 μ m pixel pitch and a wide, 16-bit dynamic range to deliver incredible high quality images across a wide range of dose and body thicknesses. Also featuring an exciting patented innovation in FPD design called ISS (Irradiation Side Sampling) technology, D-EVO results in excellent DQE for consistent, sharp, high quality images with low noise and outstanding contrast resolution. These technology advances coupled with Fujifilm's renowned Image Intelligence™ processing, delivers Fujifilm's outstanding image quality.

Positioning Made Easy!

No batteries required! D-EVO's detachable cord offers ultra-fast image transmission with consistent, stable power and network connectivity for reliability and uptime you can count on. It provides maximum versatility for use with cross-table and gurney exams. D-EVO's cord offers flexibility to interchange with additional detectors and/or upright and table devices and simplifies installation and maintenance.

Is the D-EVO right for your environment?



Yes! FDR D-EVO is easy to use and offers a smooth transition to digital clinical workflow. D-EVO's size allows it to seamlessly fit into any environment and make an immediate impact. It fits standard cassette holders and bucky devices with no changes needed. So whether your department is all analog, CR or already all DR, D-EVO's 14 x 17 inch FPD is the right choice for you!

Currently All Analog or CR?

Just plug and play. The D-EVO easily slides into any existing bucky and can be used for tabletop examinations too. Since the bucky is not altered, standard cassettes can still be used on demand.

Already have Fujifilm's CR?

D-EVO's FDX Console connects to existing FCR and features a user interface consistent with Fujifilm's Flash IIP, making integration and training quick and easy. Additionally, images processed on other FCR devices can be seamlessly combined at the D-EVO's FDX Console within one exam screen, further simplifying workflow and maintaining consistency.

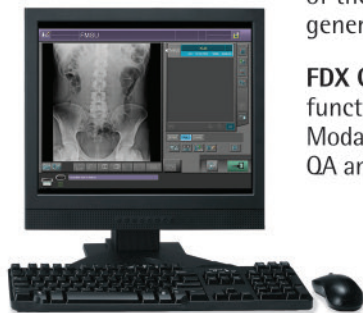
Already using DR?

FDR D-EVO is a great complement to any DR room. It's ideal for those cross-table lateral exams such as hips and decubitus views. And also well suited for unsteady patients who are unable to stand from their wheelchairs and/or stretcher patients requiring critical images, such as an AP Chest or even extremity exams.

Specifications

FDR D-EVO is an indirect-conversion amorphous silicon (a-Si) portable flat panel detector utilizing GOS (Gd2O2S, Gadolinium OxySulfide) as its scintillator. FDR D-EVO's detector has Fujifilm's unique Irradiation Side Sampling system which captures x-ray energy from the irradiation side, reducing scatter and blur and increasing sharpness and DQE compared to traditional GOS detectors.

FDR D-EVO standard retrofit configuration includes an FDX Console, a control box, a power supply and one or two D-EVO portable detectors. The standard room and connection layout is shown in the system configuration diagram below. The system operates on 110VAC and standard 100/1000 Base-T Ethernet network connections are required for the control unit box and the FDX console. Synchronization of the detector activation requires a simple connection to the exposure circuitry of the existing generator system to the detector's power supply box.

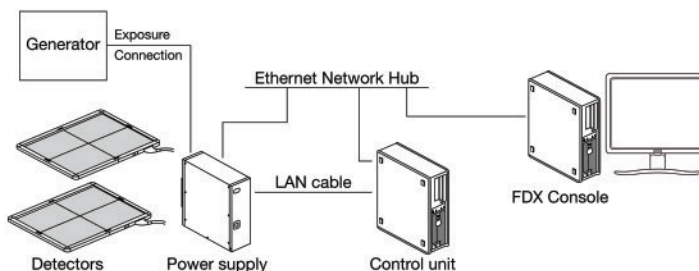


FDX Console technologist workstation features the latest hardware and software platform with excellent functionality and an intuitive interface. It performs patient ID and connects to the HIIIS/RIS via DICOM Modality Worklist, automatically applying advanced image processing for consistency, performing QA and image transmission, all with an easy to use and customizable user interface.

Fujifilm Integrated Room Systems - D-EVO will be optionally available with a complete integrated X-ray room package. Turn-key D-EVO Suites will offer D-EVO detector(s) with high quality front end X-ray systems and robust upright and table devices. These integrated rooms will additionally feature Fujifilm's SpeedLink X-ray Control Software** which automatically pre-sets X-ray generator techniques and collimation mapping preferred parameters to the exam menu selected and eliminates workflow steps for the technologist.

Options

- **Grids** – special fitting snap-on grids are available in standard ratios and focal distances.
- **SE Adapter** – special landscape positioning adapter for bucky devices that require additional clearance and shielding to accommodate the detector cable. Adapter protects cord from rubbing or getting caught when opening and closing the pull-out bucky mechanism.
- **DAP** – dose area product monitoring can be achieved with add on meter system from Vacu-Dap.
- **QC Phantom** – Fujifilm's 1-Shot Phantom and 1-Shot Phantom Plus are compatible with this system.
- **Basic System Configuration** – one or two detectors can be connected to a single power supply unit.



Connections and General Specifications

- **Dimensions** – cassette external: (equivalent to standard 14x17" cassette) 18x15x.55". Image field size: ~14x17". Weight: 6.15 lbs., withstands 200 lbs. distributed weight. Power supply: 13.8x13.8x4.7", 17.2 lbs. Control unit: 15.7x14x4.5", 18.3 lbs.
- **Detachable Detector Cord** – D-EVO utilizes a 9-wire cable, 15mm diameter cord. The detector's 3 ft. cord connects via a sturdy push-and-twist connector to a 16 ft. (or 50 ft. option) cord coming from the power supply box. Up to two cables and detectors can be connected to one power supply box. Additional cord allows convenient location of one at the upright and another at the table device for optimal use with one or two detectors (or with one or two cables).
- **Power Supply to Control Unit** – uses a standard RS232C Cable (16 ft. standard length) between control unit and power supply.
- **Ethernet Connections** – uses standard Cat 5 cables and standard hub or dedicated network jack.
- **Power Supply to Generator (exposure)** – uses 15mm diameter, 9 or 3-wire cable available in 16 or 50 ft. lengths.
- **Power Requirements** – power supply, control unit and FDX Console use standard 110VAC power. Single phase 60Hz, 1.0KVA, approx. 216KJH standby. ~80W per detector (60W standby). Noise 55dB (50dB standby).

Dealer Information

A Walsh Imaging, Inc.
55 Cannonball Road
Pompton Lakes, NJ 07442

Phone 1-866-429-9729
Web www.awalshimaging.com