

Hardware Specifications

Opal-DR

- Revolutionary 17x17 CsI Flat Panel Detector
- Low-Dose Image Processing
- Supports Off-Center Imaging
- Available For New Or Retrofit Installations

Opal-CR

- 56 Plates Per Hour
- Multiple Cassette Sizes
- 4 Cassettes Included
- 10 Pixels/mm

20/20 DR

- Active Image Matrix - 14x17"
- 100 Images Per Hour
- Available For New Or Retrofit Installations

The Leader in Chiropractic Imaging Solutions



VIZTEK

800-366-5343

www.viztek.net



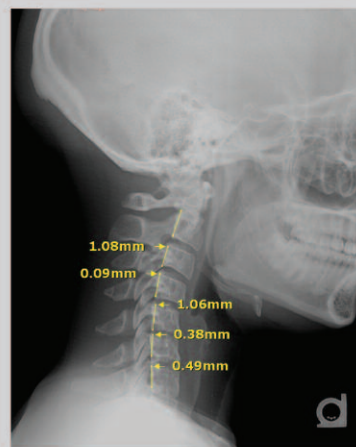
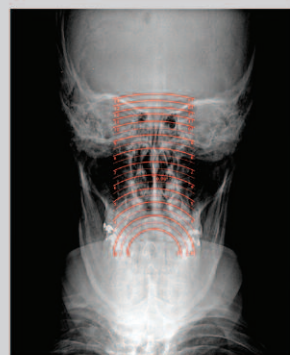
Opal-DR



20/20-DR



Opal-CR



Specialized Chiro Tool-Set

- Atlas Orthogonal Tool Set
- Complete NUCCA Tool Set
- Cervical Curve Template
- Comprehensive Line Analysis and Calculations
- Orthospinology
- Gonstead Analysis Package
 - Ilium Analysis
 - Gonstead Ruler
 - George's Lines

Opal-CHIRO PACS

- Exam Room Viewing
- EMR Integration
- CD Burning
- Paper Print
- Scan Documents into Exams
- Import Outside CDs

Call Viztek Today and Ask for Your Chiropractic Representative

- 800-366-5343 -
- www.viztek.net -

Dealer Information

A Walsh Imaging, Inc.
55 Cannonball Road
Pompton Lakes, NJ 07442

Phone 1-866-429-9729
Web www.awalshimaging.com